

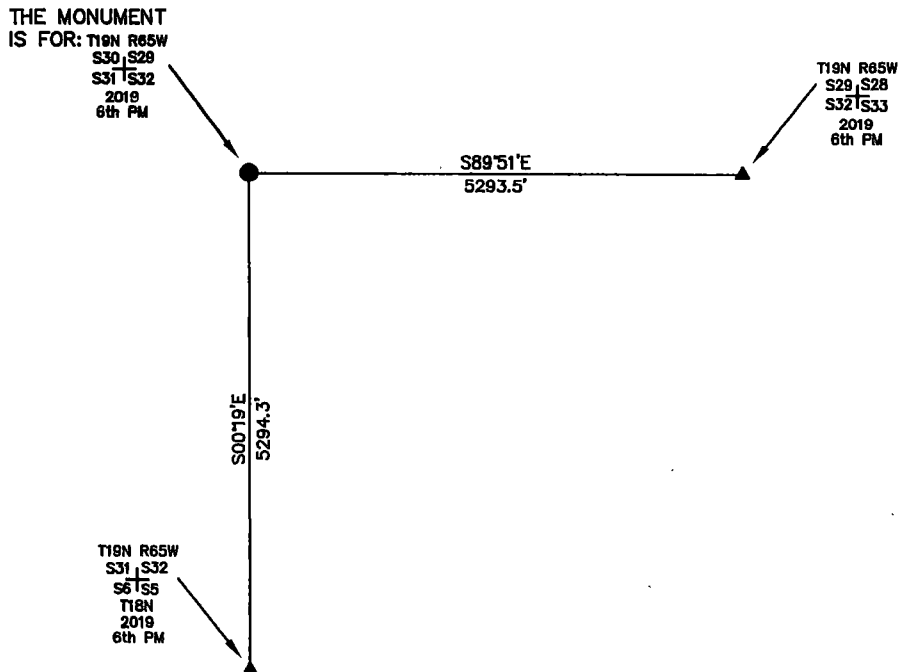
State of Wyoming Corner Record

CORNER PERPETUATION AND FILING ACT,

Regulations of the Board of Registration for Professional Engineers and Land Surveyors.)

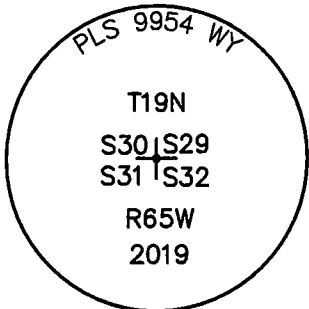
Reverse side of this form may be used if more space is needed.

Record of original survey and citation of source of historic information (if corner is lost or obliterated). Description of corner monumentation evidence found and/or monument and accessories established to perpetuate the location of this corner. Sketch of relative location of monument, accessories, and reference points with course and distance to adjacent corner(s) (if determined in this survey). Method and rationale for reestablishment of lost or obliterated corner.



FOUND TRACES OF THE ORIGINAL MONUMENT IN A DEPRESSION AND SET THE MONUMENT FOR THIS CORNER COMMON TO 4 SECTIONS WHICH IS A 2019 2.5" PRIVATE ALUMINUM CAP PROTRUDING 0.7' ABOVE THE GROUND ON A #5 REBAR POSITION FIT THE G.L.O PLAT VERY WELL IN ALL 4 DIRECTIONS, SET A 5" "T" POST ON THE NORTH SIDE OF THE MONUMENT.

NOTE: LINES SHOWN ARE BETWEEN MONUMENTS AND MAY OR MAY NOT BE SECTION OR SECTION SUBDIVISION LINES.



Marking on the Cap

Date of Field Work: 03/28/19 Office Reference:

CORNER MONUMENT SYMBOLS

- RECORD IS FOR THIS CORNER MONUMENT.
- ▲ A RELATED CORNER OR WC MONUMENT.



SCALE 1"=2000'
(EXCEPT IN TRIVIAL CASES)
BEARINGS ARE RELATED TO WGS 84 WITH GPS OBSERVATIONS
DRAWN BY: K.H.
P.C. L. SHANKS
COUNTY: LARAMIE

CROSS INDEX DIAGRAM

1	2	3	4	5	6	7	8	9	10	11	12	13	14	15	16	17	18	19	20	21	22	23	24	25	
A																									A
B																									B
C																									C
D																									D
E																									E
F																									F
G																									G
H																									H
J																									J
K																									K
L																									L
M																									M
N																									N
O																									O
P																									P
Q																									Q
R																									R
S																									S
T																									T
U																									U
V																									V
W																									W
X																									X
Y																									Y
Z																									Z
1	2	3	4	5	6	7	8	9	10	11	12	13	14	15	16	17	18	19	20	21	22	23	24	25	

Firm/Agency, Address

UELS, LLC

3313 35TH Avenue

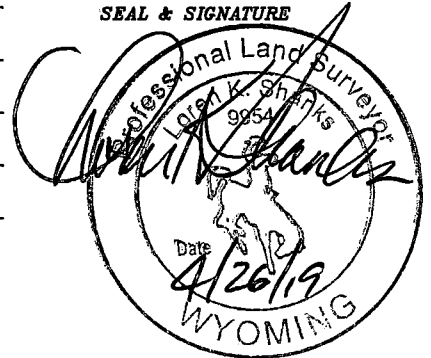
Suite B

Evans, Co 80620

Telephone Number: 970-506-1544

This corner record was prepared by me or under my direction and supervision.

SEAL & SIGNATURE



RECP #: 754825
RECORDED 6/10/2019 AT 9:57 AM BK# 2624 PG# 1189
Debra K. Lee, CLERK OF LARAMIE COUNTY, WY PAGE 1 OF 1

CORNER COMMON TO 4 SECTIONS
Corner Name: NORTHEAST CORNER OF SECTION 31 Section: 31 T 19 N R 65 W, 6TH P.M. Cross Index No.: V-5
SBRPEPLS/PLSW: March 1994 (CLCR...SJA)